



OSU Forensics Team,
Oregon State University, 209 Shepard Hall, Corvallis, Oregon 97331-6199
T 541-737-8230 | F 541-737-4443 | mark.porrovecchio@oregonstate.edu

November 28, 2016

Dear Colleagues,

As we push our way toward the holidays and the end of 2016, OSU is busy making plans for the 11th (Once Again) Annual Earl Wells Memorial Speakeasy to be held on the beautiful Oregon State University campus on Saturday-Sunday, February 18-19, 2017.

Schools from inside and outside the region can have their students participate in both IEs and IPDA in one weekend. The goal, as in years past, is to provide schools with a full-service "speech and debate" tournament in a convenient and stress free (we hope!) two-day tournament format.

The tournament will feature:

- Five preliminary rounds of IPDA debate with quarter, semi, and final rounds for both Novice and Open (entries permitting);
- Two preliminary and final (entry permitting) rounds of AFA events;
- The *positively* cringe-inducing event, Bad Interp;
- A top notch tab room staff;
- The Jeanne Hartman Popovich Debate Speaker Award;
- The Minette Phillips Overall Speaker Award;
- The Pentathlon Award;
- (Somewhat) healthy snacks throughout the tournament;
- The Coaches'/Judges' Lounge for time away from the lil' ones; and
- Much, much more!

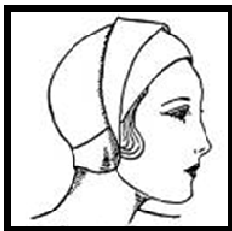
This tournament supports the goals of the Northwest Intercollegiate Debate League (NIDL), the Greater Portland Intercollegiate Debate League (GPIDL), the International Public Debate Association (IPDA), and NFC Code of Ethics. We believe that debate is a public communication event. Our tournament reflects this philosophy.

We hope you'll join us and our colleagues in Portland.

Sincerely,

Mark Porrovecchio, Director of Forensics
(541) 737-8230
mark.porrovecchio@oregonstate.edu

Stephanie Saracco, Assistant Director of Forensics



11th Annual Earl Wells Memorial Speakeasy
Oregon State University
February 18-19, 2017

ENTRIES:

Schools must submit entries via <http://www.speechwire.com/> (tournament page online by early January).
Entry deadline: **Tuesday, February 14th, at 5:00pm**. We reserve the right to restrict school entries in cases where they do not bring enough judges (see below).

FEES:

Cash or check. If the latter, please make checks payable to: **Oregon State University Foundation c/o OSU Forensics**. We cannot accept checks made out to any other entity. Fees will be assessed at 5:00pm on **Wednesday, February 19th, at 5:00pm**. After that date, no adds, only drops and kind words of support.

School Fee	\$40
Student Fee	\$5 (per student)
Individual Events (per slot)	\$8
IPDA	\$40
Uncovered IE (1:6)	\$20 (per uncovered slot)
Uncovered IPDA (1:4)	\$80 (per uncovered debater)

JUDGING:

We would rather have your judges than your money. Judges can be fairly scarce in Corvallis. So be prepared: if you don't bring judges, there will be lots of lay judges. We'll train them, but who knows!?! I also recognize that we are aggressive in our use of judges, particularly when we have to double-flight IPDA. Whenever possible, we will try to give judges breaks. But, again, we are dealing with a limited judging pool. We appreciate your understanding.

PARKING:

Parking is free on Saturdays and Sundays. But please pay attention to posted signs regarding restricted spots. You get a ticket . . . well, you get a ticket. There are two parking lots—one behind Dearborn and one behind Gilbert—that are directly off of NW Monroe Ave. and within easy walking distance of the main gathering places for the tournament (see map link: <http://oregonstate.edu/campusmap/>).

SMOKING:

Please note that, as of Sept. 1, 2012, the OSU campus is non-smoking. If you want to smoke, you will need to go off campus on NW Monroe Ave. But please dispose of your butts. Smokers are already stereotyped. Don't add fuel to the fire (so to speak). Keep this in mind: if Mark can do it, so can you . . . he knows you can. No one likes a quitter.

REGISTRATION/COMMON AREA/PREP AREAS:

Registration/tab will be SHEP 209; the Coaches'/Judges' Lounge will be in SHEP 202; the common/ballot return and pick-up area will be GILB 124; IPDA topic announcements will be in GILB 224; and extemp prep will be in DEAR 118. Please refrain from using rooms that are not marked as reserved for the tournament. And make sure to enact a "we are leaving, so we will clean up" approach to your debris.

FOOD:

We will provide a range of snacks on both days, coffee/tea service on both mornings, and lunch on Sunday. NW Monroe Ave. also provides quick access to a variety of food and drink options.

LODGING:

There are a number of options in town for lodging. Please note that we do not have contracted rates with any of the motels/hotels in town. In many cases, you can find excellent deals online and/or alternative lodging in nearby Albany. But be forewarned: the better lodging options go quickly, especially if there is some other event on campus. Plan ahead.

INDIVIDUAL EVENTS:

We will offer the eleven standard AFA events with AFA rules and Bad Interp. Please use good judgment in assigning students to novice and open divisions; we trust you and the decisions that you make (even though certain schools have been entering students with significant amounts of high school competition experience in novice . . . you know who you are). Students may enter **three events per pattern** (but they are responsible for getting to all rounds on time). We reserve the right to collapse any event to adjust for entry size, room availability, or judge availability.

- PATTERN A: CA (O), Duo (O), Imp (N/O), Info (N/O), Poetry (O), Bad Interp (O)
Bad Interp: Speakers will attempt to satirize the conventions of oral interp as practiced in the forensics realm through the use of truly hideous, overused, or just plain trite material. The intent of the event is humor (Sidebar: Perhaps the best way to learn why you shouldn't do some things is to do it on purpose to see how silly it really is. There is education in humor). The time limit is 8 minutes.
- PATTERN B: ADS (O), DI (N/O), Ext (N/O), Per (N/O), POI (O), Prose (N/O)
Please note: Students entered in Extemp are responsible for making it to IPDA draw on time and we can make no promises that there will be internet access.

IPDA DEBATE:

IPDA: "One-on-One" debate similar to L-D debate. Time limits: 5-2-6-2-3-5-3. Central topic announcement with five topic strike. 30 minutes preparation time from *beginning* of draw. We will offer Novice (open to students who have competed in less than ten debate tournaments, high school or college, regardless of type/style of said debate) and Varsity (open to any student who is an undergraduate) divisions with Quarterfinals (as size permits) and awards for the top five speakers in each division. We are scheduled to double flight rounds and will adjust the schedule if size permits

Please note: this tournament is endorsing "Aff Resolution Interpretation Disclosure": if the Neg chooses to ask how the Aff plans to interpret a given resolution, the Aff is obligated to tell them. This is a matter of courtesy/decorum and allows both sides to make the most out of prep time (hiding your interp of the resolution is odd; it is also poor form and counter to the merits of collegiate debate). Please inform your students and adjust your coaching/judging in advance. But we should enact the best practices of IPDA if we want to foster goodwill for all who compete in the event.

For more information on IPDA, see: www.ipdadebate.info.

SPECIAL AWARDS:

The Earl Wells Memorial Speakeasy celebrates the rich history of forensics and its continued vitality. As such, we offer several special awards:

- The Jeanne Hartman Popovich Debate Speaker Award will be given to the top *open* debate speaker at the tournament;
- The Minette Phillips Overall Speaker Award will recognize the top student competing in a minimum of three *open* individual events and *varsity* debate;
- The Lloyd Crisp Critics Award will be given out this year to a deserving coach/judge; and
- The Pentathlon Award will recognize the top student competing in five or more *open* individual events.

The winners of the first three awards will receive a plaque and permanent remembrance on a perpetual trophy housed in the Department of Speech Communication.

This tournament abides by the AFA Code of Ethics and the NFC Code of Ethics.

TENTATIVE SCHEDULE

Saturday, February 18:

7:30 Registration -- Shepard 209
Snacks -- Gilbert 124
8:30 1A
10:00 2A
11:45 IPDA 1-- Gilbert 224
1:15 Extemp draw -- Dearborn 118
1:45 1B
3:15 IPDA 2
4:30 Extemp draw
4:45 2B
6:15 IPDA 3

Sunday, February 19:

8:00 IPDA 4
9:30 IPDA 5
11:00 IE Finals A
12:30 Lunch -- provided by the tournament outside Gilbert 124
1:00 IPDA Quarterfinals
2:30 Extemp Draw
2:45 IE Finals B
4:15 IPDA Semis (hopefully single flight . . . think positive!)
5:15 IPDA Finals
6:30 Awards & Sweepstakes -- Gilbert 124

PATTERN A: CA (O), Duo (O), Imp (N/O), Info (N/O), Poetry (O), Bad Interp (O)

PATTERN B: ADS (O), DI (N/O), Ext (N/O), Per (N/O), POI (O), Prose (N/O)

COACHES'/JUDGES' LOUNGE located in the first floor Shepard Library . . . stop by for some peace and quiet away from "you know who."